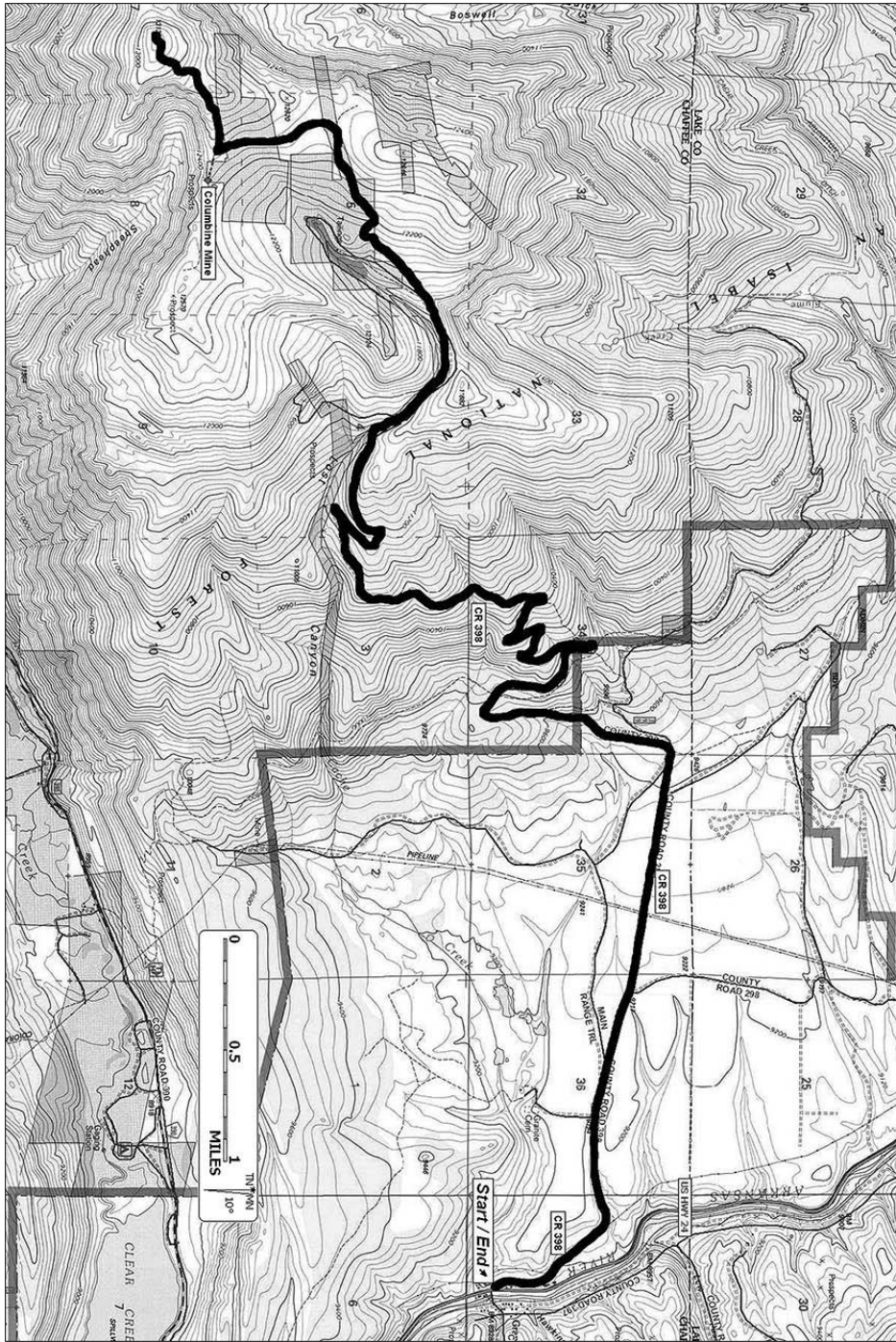


Excerpted with permission from the publisher of *Arkansas Valley Mountain Biking*
Ride 16: Lost Canyon Road (Columbine Clim)



Map 16: Lost Canyon Road (Columbine Clim) (© National Geographic)

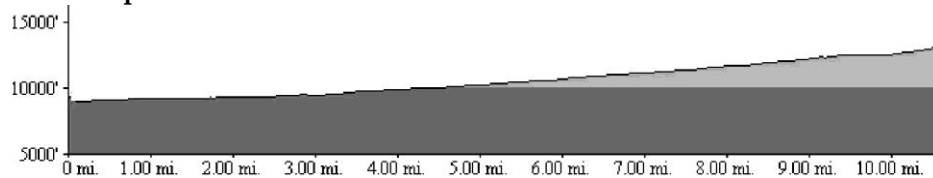
The ride itself, the crux climb of the Leadville Trail 100 racecourse, is not that bad. The first eight miles are, despite the tremendous gain in altitude, reasonably graded and easy to spin. Once you get above tree line things get a little tougher, but it's still manageable for strong riders.

Ride length: 21.4 miles
Ride type: out-and-back
Riding time: 3.5 hours
Surface: dirt road (rough and steep near the top)
Elevations: start/end 8,950'; max 13,130'; min 8,950'

Total climbing: gain/loss 4,130'
Aerobic level: strenuous (lots of climbing)
Technical level: 3- (it's a little rough near the top)
Season: July through October
USGS Quadrangle: Granite

Trailhead GPS coordinates: 39° 2.61' N; 106° 15.985' W

Elevation profile:



Getting there: from the stoplight at the intersection of US 24 and 6th Street in Leadville, drive 17.6 miles south on US 24. Once in Granite, turn left onto CR 397 and drive over the one-lane bridge. Turn right and park in the boat launch lot between the river and the railroad tracks. From the parking area, ride back across the bridge and carefully cross the highway. The ride starts at the intersection of US 24 and CR 398 (Lost Canyon Road). Use caution when crossing the highway!

Trailhead/trail amenities: general store/gas station at start; seasonal port-o-pot at parking area.

The ride:

- 0.0 From the intersection of CR 398 and US 24, start climbing on CR 398.
- 1.1 Continue straight on CR 398, passing CR 398D on your left.
- 1.7 Bear left at the fork, staying on CR 398 as CR 398B peels away on your right.
- 2.1 Continue straight on CR 398, passing the power line road on your left.
- 2.8 Bear left, staying on CR 398 as CR 399 heads off to your right. *Note- the race course intersects CR 398 about 0.2 miles before this intersection but that portion of the course is on private property and only accessible on race day.*
- 3.7 Pass some campsite spurs on your left. *Note- the Colorado Trail intersects the road on your left in about 100 yards.*
- 3.9 Pass the Colorado Trail single-track intersection on your right.
- 6.6 Continue on the main road as it switches back to the right.
- 7.7 Stay left on the main road as things get steeper and looser.
- 8.1 Continue straight on the main road as you pass a spur leading to the remnants of an old cabin on your right. As you look left up the valley, you will see the Gold Basin Mine.
- 8.2 Bear right at the fork. Continue along a steep and rough section for about 30 yards then bear right again at the second fork.
- 8.5 Continue straight on the main road, passing a spur on the right.
- 9.4 Bear left at the fork as you pedal along a high plateau.
- 10.0 Bear left at the intersection and ride an additional 0.2 miles to explore the Columbine Mine site (the mine site is the halfway/turnaround point of the Leadville Trail 100 race). Enjoy the views of the 14'ers (Oxford, Belford, Missouri, and Huron) across the valley. Few views anywhere are more spectacular than this!

Options: shorten your climb by driving as high as you want along CR 398. The road is passable for most vehicles for the first 7 miles.